



HWH[®] AP37815 Class C Leveling System

Ford E350/E450 Cutaway Chassis (Class C)
Chevy G3500 Cutaway Chassis (1997 and newer) (Class C)

Joystick Manual Control with Kick-Down Jacks



AP0227 Jack Kit

Two Kick-Down
(Power-Extend/Spring-Retract) Jacks with a
lifting capacity of 6,000 lbs. per jack Low Profile



AP0228 Jack Kit

Two Kick-Down
(Power-Extend/Spring-Retract) Jacks with a
lifting capacity of 6,000 lbs. per jack Standard Profile



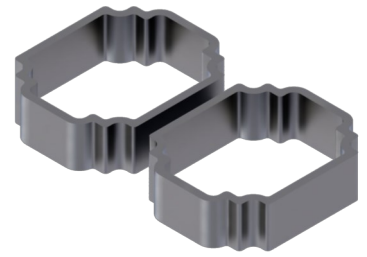
AP37171 Power Unit Kit

225 Series, Pump-Motor-Tank/12V DC
Mounting Channel & Hardware
Joystick Controlled System



AP0897 (Two) Universal Bracket Kits

One for front and one for rear jacks.



AP9434 Spacer Bracket

1.5" (Rear)



AP28828 Control Kit

225 Series, Joystick-Controlled Hydraulic Leveling System
with BI-AXIS[®] Control, Integrated Indicator Light Panel,
Leveleze[®] Light Package, Harness & Hydraulic Hoses



www.HWH.com



2096 Moscow Road, Moscow, IA 52760 Ph: 800-321-3494 | Fax: 563-724-3408



Installation Info

STRONG, RELIABLE, HYDRAULIC POWER

ML51120_AP37815.PUB 19SEP14



HWH[®] AP37816

Class C Leveling System

2007 & newer Winnebago Aspect & Itasca Cambria Ford E450
Cutaway Chassis (Class C)

Joystick Manual Control with Straight-Acting Jacks



AP36364 Front Jack Kit

Two Straight-Acting
(Power-Extend/Spring-Retract) Jacks with a
lifting capacity of 4,000 lbs. per jack Standard Profile



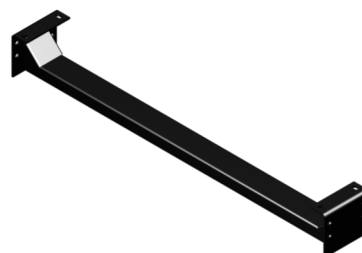
AP36365 Rear Jack Kit

Two Straight-Acting
(Power-Extend/Spring-Retract) Jacks with a
lifting capacity of 6,000 lbs. per jack on the rear



AP37171 Power Unit Kit

225 Series, 12 Volt DC Motor and Pump
125 amp - 3,000 psi relief Pressure / Return Parts
for joystick controlled system.



AP36366 Rear Jack Cross Tie Kit



AP37511 Control/Hose Kit

225 Series, Joystick-Controlled Hydraulic Leveling
System with BI-AXIS[®] Control, Integrated Indicator
Light Panel, Leveleze[®] Light Package, Harness &
Hydraulic Hoses



www.HWH.com



2096 Moscow Road, Moscow, IA 52760 Ph: 800-321-3494 | Fax: 563-724-3408



Installation Info

STRONG, RELIABLE, HYDRAULIC POWER

ML51120_AP37816.PUB 09OCT15



HWH[®] AP49818 Class C Leveling System

Ford E350/E450 Cutaway Chassis (Class C)
Chevy G3500 Cutaway Chassis (1997 and newer) (Class C)

Computer Automatic Control with Kick-Down Jacks



AP0227 Jack Kit

Two Kick-Down

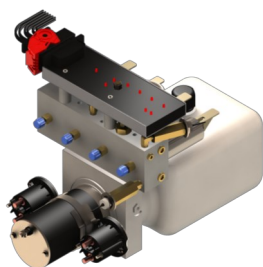
(Power-Extend/Spring-Retract) Jacks with a
lifting capacity of 6,000 lbs. per jack Low Profile



AP0228 Jack Kit

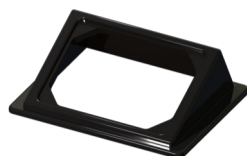
Two Kick-Down

(Power-Extend/Spring-Retract) Jacks with a
lifting capacity of 6,000 lbs. per jack Standard Profile



AP47564 Power Unit Kit

725 Series, 12 Volt DC Motor and
Pump 125 amp - 3,000 psi relief
with prewired control module
and jack valving



AP35390 Bezel Plate



AP47560 Control Kit

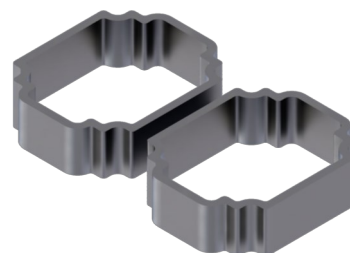
725 Series, Single-Step BI-AXIS[®]
Touch Panel-Controlled Hydraulic
Leveling System with
Leveleze[®] Light Package



AP0252 Hose Kit



AP0897 (Two) Universal Bracket Kits
One for front and one for rear jacks.



AP9434 Spacer Bracket
1.5" (Rear)



www.HWH.com



2096 Moscow Road, Moscow, IA 52760 Ph: 800-321-3494 | Fax: 563-724-3408



Installation Info

STRONG, RELIABLE, HYDRAULIC POWER

ML51120_AP49818.PUB 26SEP14



HWH[®] AP49820 Class C Leveling System

2007 & newer Winnebago Aspect & Itasca Cambria Ford E450
Cutaway Chassis (Class C)

Computer Automatic Control with Straight-Acting Jacks



AP36364 Front Jack Kit

Two Straight-Acting

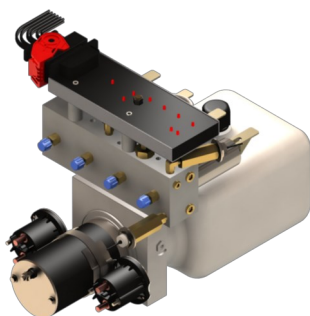
(Power-Extend/Spring-Retract) Jacks with a
lifting capacity of 4,000 lbs. per jack Standard Profile



AP36365 Rear Jack Kit

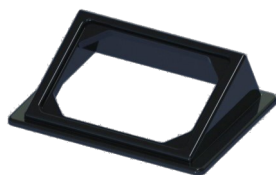
Two Straight-Acting

(Power-Extend/Spring-Retract) Jacks with a
lifting capacity of 6,000 lbs. per jack on the rear



AP47564 Power Unit Kit

725 Series, 12 Volt DC Motor and
Pump 125 amp - 3,000 psi relief
with prewired control module
and jack valving



P35390 Bezel Plate



AP47561 Control Kit

725 Series, Single-Step BI-AXIS[®]
Touch Panel-Controlled Hydraulic
Leveling System with
Leveze[®] Light Package



AP0252 Hose Kit



AP36366 Cross Tie Kit (Rear)



www.HWH.com



2096 Moscow Road, Moscow, IA 52760 | Ph: 800-321-3494 | Fax: 563-724-3408



Installation Info

STRONG, RELIABLE, HYDRAULIC POWER

ML51120_AP49820.PUB 12OCT15



HWH® AP53802

Class C Leveling System

Ford E350/E450 Cutaway Chassis (1998 and newer) (Class C)

Will not fit 2007 & newer Winnebago Aspect & Itasca Cambria Ford E450/E350 Cutaway Chassis (Class C)

Computer Automatic Control with Straight-Acting Jacks



AP53804 Front Jack Kit

Two Straight-Acting

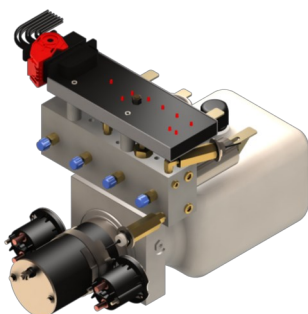
(Power-Extend/Spring-Retract) Jacks with a lifting capacity of 4,000 lbs. per jack Standard Profile



AP53805 Rear Jack Kit (Clamp-On)

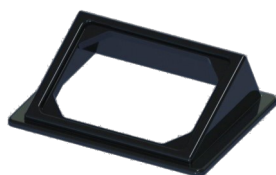
Two Straight-Acting

(Power-Extend/Spring-Retract) Jacks with a lifting capacity of 6,000 lbs. per jack on the rear



AP47564 Power Unit Kit

725 Series, 12 Volt DC Motor and Pump 125 amp - 3,000 psi relief with prewired control module and jack valving



P35390 Bezel Plate



AP52865 Control Kit

725 Series, Single-Step BI-AXIS® Touch Panel-Controlled Hydraulic Leveling System with Leveleze® Light Package



AP0252 Hose Kit



AP52993 Rear Jack Cross Tie Kit



www.HWH.com



2096 Moscow Road, Moscow, IA 52760 | Ph: 800-321-3494 | Fax: 563-724-3408



Installation Info

STRONG, RELIABLE, HYDRAULIC POWER

ML51120_AP53802.PUB 09OCT15



HWH[®] AP53803

Class C Leveling System

Ford E350/E450 Cutaway Chassis (1998 and newer) (Class C)

Will not fit 2007 & newer Winnebago Aspect & Itasca Cambria Ford E450/E350 Cutaway Chassis (Class C)

Joystick Manual Control with Straight-Acting Jacks



AP36364 Front Jack Kit

Two Straight-Acting
(Power-Extend/Spring-Retract) Jacks with a
lifting capacity of 4,000 lbs. per jack Standard Profile



AP53806 Rear Jack Kit (Clamp-On)

Two Straight-Acting
(Power-Extend/Spring-Retract) Jacks with a
lifting capacity of 6,000 lbs. per jack on the rear



AP37171 Power Unit Kit

225 Series, 12 Volt DC Motor and Pump
125 amp - 3,000 psi relief Pressure / Return Parts
for joystick controlled system.



AP52993 Rear Cross Tie Kit



AP37511 Control/Hose Kit

225 Series, Joystick-Controlled Hydraulic Leveling System
with BI-AXIS[®] Control, Integrated Indicator Light Panel,
Leveleze[®] Light Package, Harness & Hydraulic Hoses



www.HWH.com



2096 Moscow Road, Moscow, IA 52760 Ph: 800-321-3494 | Fax: 563-724-3408



Installation Info

STRONG, RELIABLE, HYDRAULIC POWER

ML51120_AP53803.PUB 12OCT15



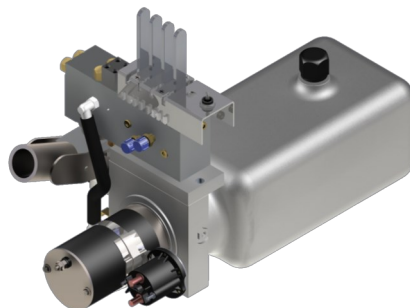
HWH[®] AP43038 **5th Wheel Landing Gear**

Some fabrication may be required for mounting.



AP43091 Jack

Two Straight-Acting,
(Power-Extend/Power-Retract) Jacks with a
lifting capacity of 7,000 lbs. per jack and a 21" stroke



AP43096 Power Unit

Hand/Electric Pump
with Hydraulic Switches



AP43072 Hose Kit



AP43090
Mounting Kit



AP43594
Mounting Kit



www.HWH.com



2096 Moscow Road, Moscow, IA 52760 Ph: 800-321-3494 | Fax: 563-724-3408



Installation Info

STRONG, RELIABLE, HYDRAULIC POWER

ML51120_AP43038.PUB 22SEP14



HWH[®] AP50592 5th Wheel Leveling System with Landing Gear

Some fabrication may be required for mounting.



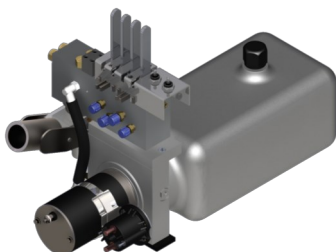
AP50763 Jack

Two Straight-Acting,
(Power-Extend/Power-Retract) Jacks with a
lifting capacity of 7,000 lbs. per jack and a 21" stroke



AP46747 Jack

Two Straight-Acting,
(Power-Extend/Spring-Retract) Jacks with a
lifting capacity of 9,000 lbs. per jack and a 13" stroke



AP42768 Power Unit
Hand/Electric Pump with
Hydraulic Switches



AP43090
Clamp Mounting Kit

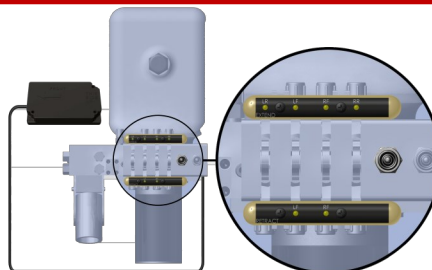


AP43594
Weld Mounting Kit



AP43072 & AP43085
Hose Kit

*The Leveleze[®] Indicator makes leveling
easy. Avoid the confusion of looking at
a level bubble to figure which side or
end of the trailer needs to be leveled.*



Optional AP43076
Leveleze[®] Indicator Light System



www.HWH.com



2096 Moscow Road, Moscow, IA 52760 Ph: 800-321-3494 | Fax: 563-724-3408



Installation Info

STRONG, RELIABLE, HYDRAULIC POWER

ML51120_AP50592.PUB 22SEP14



HWH[®] AP43037

5th Wheel Landing Gear

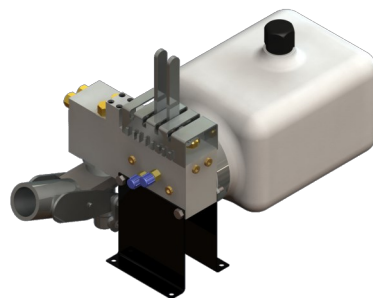
Some fabrication may be required for mounting.

Hand Pump with Hydraulic Switches **(no electric power is required)**



AP43091 Jack

Two Straight-Acting,
(Power-Extend/Power-Retract) Jacks with a
lifting capacity of 7,000 lbs. per jack and a 21" stroke



AP42771 Power Unit

Hand Pump with Hydraulic Switches
(no electric power is required)



AP43090

Clamp Mounting Kit



AP43594

Weld Mounting Kit



AP43072

Hose Kit



www.HWH.com



2096 Moscow Road, Moscow, IA 52760 Ph: 800-321-3494 | Fax: 563-724-3408



Installation Info

STRONG, RELIABLE, HYDRAULIC POWER

ML51120_AP43037.PUB 22SEP14



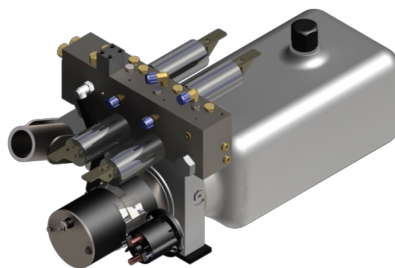
HWH[®] AP43042 **5th Wheel Landing Gear**

Some fabrication may be required for mounting.



AP43091 Jack

Two Straight-Acting,
(Power-Extend/Power-Retract) Jacks with a
lifting capacity of 7,000 lbs. per jack and a 21" stroke



AP43094 Power Unit

Hand/Electric Pump
with Electric Solenoids



AP43114 Remote Electric Panel



AP43072 Hose Kit



AP43090
Clamp Mounting Kit



AP43594
Weld Mounting Kit



www.HWH.com



2096 Moscow Road, Moscow, IA 52760 Ph: 800-321-3494 | Fax: 563-724-3408



Installation Info

STRONG, RELIABLE, HYDRAULIC POWER

ML51120_AP43042.PUB 22SEP14



HWH® AP50796 5th Wheel Leveling System with Landing Gear

Some fabrication may be required for mounting.



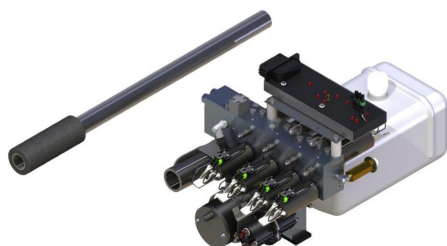
AP42894 Front Jack Kit

Two Straight-Acting,
(Power-Extend/Power-Retract) Jacks with a
lifting capacity of 7,000 lbs. per jack
and a 21" stroke



AP48140 Rear Jack Kit

Two Straight-Acting
(Power-Extend/Spring-Retract) Jacks with a
lifting capacity of 9,000 lbs. per jack
and a 13" stroke

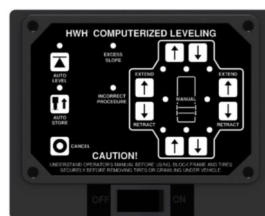


AP50835 Power Unit

Hand/Electric Pump with
Hydraulic Solenoids, Computerized
Automatic Leveling and Manual Back-up



AP43072 & AP43085 Hose Kit



AG50797 Control Kit

Single-Step BI-AXIS® Touch Panel
Controlled Hydraulic Leveling System
with Harness and
Leveze® Light Package



AP43090

Clamp Mounting Kit



AP43594

Weld Mounting Kit



Rear Jack Crossties

P51894 Crosstie Inner

P43078 Crosstie Outer &

AP49765 Clamp Kit Cross Tie



www.HWH.com



2096 Moscow Road, Moscow, IA 52760 Ph: 800-321-3494 | Fax: 563-724-3408



Installation Info

STRONG, RELIABLE, HYDRAULIC POWER

ML51120_AP50796.PUB 12OCT15



HWH[®] AP45586 Class A Leveling System

Ford F53/16" Tires/1988 and older
Workhorse/Chevy to 2001 - (Brackets Ordered Separately)



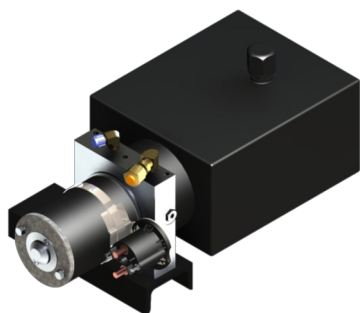
AP0228 Jack Kit

Two Kick-Down (Power-Extend/Spring-Retract) Jacks
with a lifting capacity of 6,000 lbs. per jack
Standard Profile



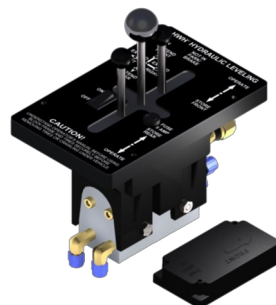
AP0229 Jack Kit

Two Kick-Down
(Power-Extend/Spring-Retract) Jacks with a lifting
capacity of 9,000 lbs. per jack Low Profile



AP10471 Power Unit Kit

225 Series, Pump-Motor-Tank/12V DC
Mounting Channel & Hardware
Joystick controlled system



AP30030 Control Kit

225 Series, Joystick-Controlled Hydraulic Leveling System
with BI-AXIS[®] Control and Integrated Indicator
Light Panel & Leveleze[®] Light Package



AP0240 Hose Kit

Note: Brackets are chassis specific and
are ordered separately.



2096 Moscow Road, Moscow, IA 52760 | Ph: 800-321-3494 | Fax: 563-724-3408 | www.HWH.com

STRONG, RELIABLE, HYDRAULIC POWER

ML51120_AP45586.PUB 08AUG13



HWH[®] AP49823 Class A Leveling System

Ford F53/2004 and newer

19.5" & 22.5" Tires, 15,700 lbs., 18,000 lbs. or 20,500 lbs. GVWR

10th Digit In VIN must be a four or larger



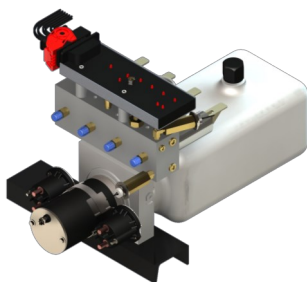
AP52397 Jack Kit

Two Straight-Acting (Power-Extend/Spring-Retract) Jacks with a lifting capacity of 6,000 lbs. per jack



AP52398 Jack Kit

Two Straight-Acting (Power-Extend/Spring-Retract) Jacks with a lifting capacity of 9,000 lbs. per jack



AP47565 Power Unit Kit

725 Series, 12 Volt DC Motor and Pump
125 amp - 3,000 psi relief with prewired control module and jack valving

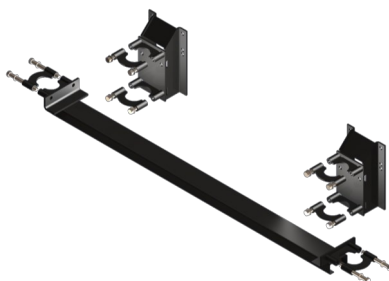


AP52399 Control Kit

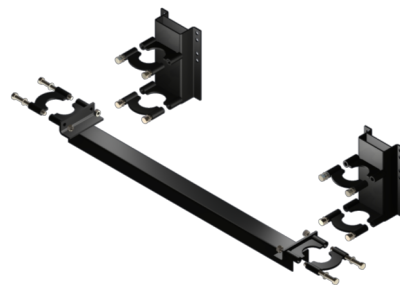
725 Series, Single-Step Computer-Controlled Hydraulic Leveling System with BI-AXIS[®] Touch Panel & Leveleze[®] Light Package



AP0240 Hose Kit



AP49762 Mounting Tie Kit
6,000 lb. 4F53F



AP49764 Mounting Tie Kit
9,000 lb. FD/WH



2096 Moscow Road, Moscow, IA 52760 | Ph: 800-321-3494 | Fax: 563-724-3408 | www.HWH.com

STRONG, RELIABLE, HYDRAULIC POWER

ML51120_AP49823.PUB 16AUG13



HWH[®] AP49824 **Class A Leveling System**

Ford F53/16" Tires/1988 and older

Workhorse/Chevy to 2001 - (Brackets Ordered Separately)



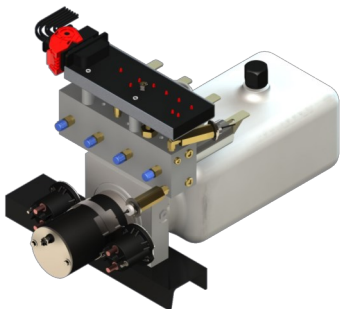
AP0228 Jack Kit

Two Kick-Down (Power-Extend/Spring-Retract) Jacks with a lifting capacity of 6,000 lbs. per jack Standard Profile



AP0229 Jack Kit

Two Kick-Down (Power-Extend/Spring-Retract) Jacks with a lifting capacity of 9,000 lbs. per jack Low Profile



AP47565 Power Unit Kit

725 Series, 12 Volt DC Motor and Pump
125 amp - 3,000 psi relief with prewired control module and jack valving



AP47561 Control Kit

725 Series, Single-Step Computer-Controlled Hydraulic Leveling System with BI-AXIS[®] Touch Panel & Leveze[®] Light Package



AP0253 Hose Kit

Note: Brackets are chassis specific and are ordered separately.



2096 Moscow Road, Moscow, IA 52760 | Ph: 800-321-3494 | Fax: 563-724-3408 | www.HWH.com

STRONG, RELIABLE, HYDRAULIC POWER

ML51120_AP49824.PUB 08AUG13



HWH[®] AP51530 Class A Leveling System

Ford F53/2004 and newer

19.5" & 22.5" Tires, 15,700 lbs., 18,000 lbs. or 20,500 lbs. GVWR
10th Digit In VIN must be a four or larger



AP49760 Jack Kit

Two Straight-Acting (Power-Extend/Spring-Retract) Jacks
with a lifting capacity of 6,000 lbs. per jack



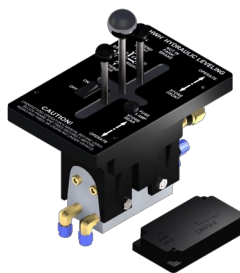
AP49761 Jack Kit

Two Straight-Acting (Power-Extend/Spring-Retract) Jacks
with a lifting capacity of 9,000 lbs. per jack



AP10471 Power Unit Kit

225 Series, Pump-Motor-Tank/12V DC
Mounting Channel & Hardware
Joystick controlled system

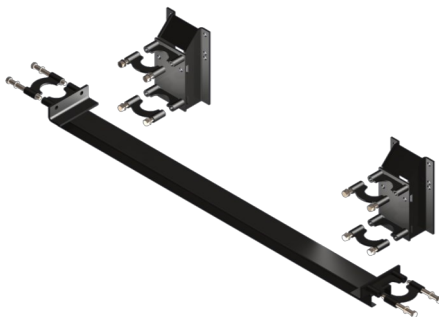


AP28825 Control Kit

225 Series, Joystick-Controlled Hydraulic Leveling System
with BI-AXIS[®] Control and Integrated Indicator
Light Panel & Leveleze[®] Light Package

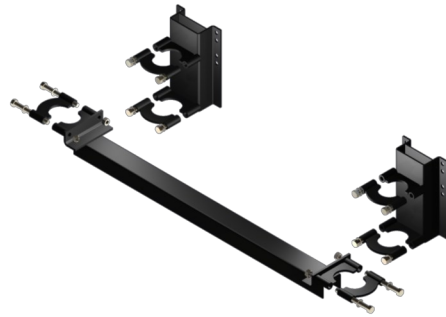


AP0240 Hose Kit



AP49762 Mounting Tie Kit

6,000 lb. 4F53F



AP49764 Mounting Tie Kit

9,000 lb. FD/WH



2096 Moscow Road, Moscow, IA 52760 | Ph: 800-321-3494 | Fax: 563-724-3408 | www.HWH.com

STRONG, RELIABLE, HYDRAULIC POWER

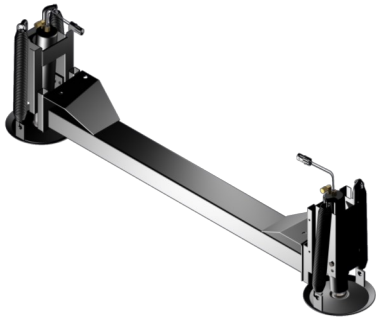
ML51120_AP51530.PUB 30JAN14



HWH[®] AP49821

Sprinter Leveling System

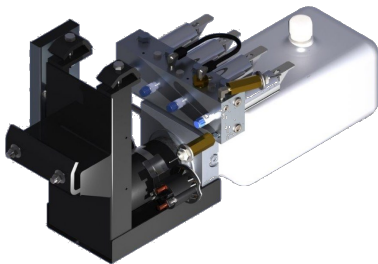
Sprinter 3500 Series Chassis, Winnebago View & Ista Navion
(Five Cylinder Engines Only)



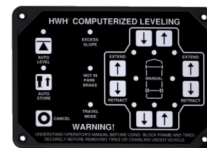
AP37523 Jack Kit
Two Straight-Acting
(Power-Extend/Spring-Retract) Jacks with a
lifting capacity of 4,000 lbs. per jack on the front
(Fits five cylinder diesel)



AP37524 Jack Kit
Two Straight-Acting
(Power-Extend/Spring-Retract) Jacks with a
lifting capacity of 6,000 lbs. per jack on the rear
(Fits five cylinder diesel)



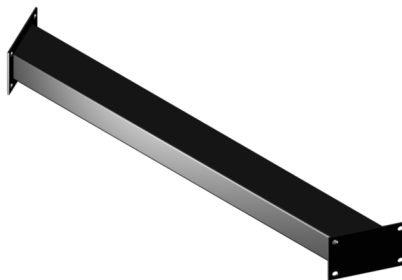
AP53008 Power Unit Kit
725 Series, 12 Volt DC Motor and Pump
125 amp - 3,000 psi relief with prewired
control module and jack valving



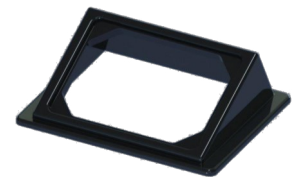
AP52515 Control Kit
725 Series, Single-Step BIAXIS[®]
Touch Panel-Controlled Hydraulic
Leveling System with
Leveleze[®] Light Package



AP0252 Hose Kit



AP37525 Crosstie Kit (Rear)



P35390 Bezel Plate



www.HWH.com



2096 Moscow Road, Moscow, IA 52760 Ph: 800-321-3494 | Fax: 563-724-3408



Installation Info

STRONG, RELIABLE, HYDRAULIC POWER

ML51120_AP49821.PUB 22SEP14



HWH[®] AP52393 Sprinter Leveling System

2008 Sprinter 3500 Series Chassis with the V6 Diesel Engine and
Coach build date after 11/2006 | Winnebago View Profile & Itasca Navion
IQ View & Navion, Fleetwood Pulse, Icon and others

*Note: View or Navion 24M with LP generator may need modifications
on the rear battery box bracket or dump valves.*



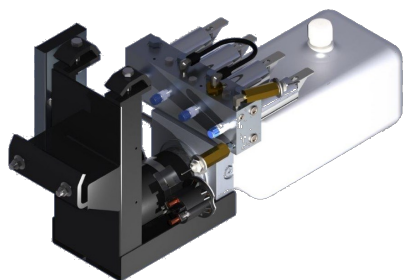
AP51904 Jack Kit

Two Straight-Acting
(Power-Extend/Spring-Retract) Jacks with a
lifting capacity of 4,000 lbs. per jack on the front



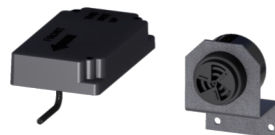
AP52759 Rear Jack Mounted Inboard OR AP52759 Rear Jack Mounted Outboard

Two Straight-Acting
(Power-Extend/Spring-Retract) Jacks with a
lifting capacity of 6,000 lbs. per jack on the rear



AP53008 Power Unit Kit

725 Series, 12 Volt DC Motor and Pump
125 amp - 3,000 psi relief with prewired
control module and jack valving

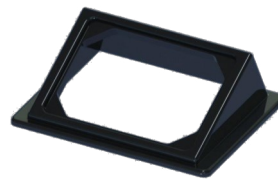


AP52515 Control Kit

725 Series, Single-Step BI-AXIS[®]
Touch Panel-Controlled Hydraulic
Leveling System with Leveleze[®] Light Package



AP0252 Hose Kit



P35390 Bezel Plate



HWH.com



2096 Moscow Road, Moscow, IA 52760 Ph: 800-321-3494 | Fax: 563-724-3408



Installation Info

STRONG, RELIABLE, HYDRAULIC POWER

ML51120_AP52393.PUB 22FEB16



HWH[®] AP53750

Travel Trailer Leveling System with Landing Gear

Some fabrication may be required for mounting.

28" and Greater Top of Frame Rail to Ground Clearance



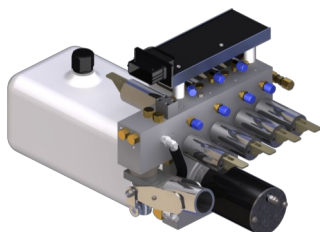
AP51342 Jack

Two Straight-Acting,
(Power-Extend/Spring-Retract) Jacks with a
lifting capacity of 6,000 lbs. per jack and a 16" stroke



AP48138 Jack

Two Straight-Acting
(Power-Extend/Spring-Retract) Jacks with a
lifting capacity of 6,000 lbs. per jack and a 13" stroke



AP51320 Power Unit

Hand/Electric Pump with Hydraulic Solenoids
Computerized Automatic Leveling and Manual Back-up



AG53751

Single-Step BI-AXIS Touch Panel
Controlled Hydraulic Leveling System with
Harness and Leveleze[®] Light Package



AP1412, AP4827, AP2464 & AP4163
Hose Kit



AP43082 & AP48080
Crosstie Outer



www.HWH.com



2096 Moscow Road, Moscow, IA 52760 Ph: 800-321-3494 | Fax: 563-724-3408



Installation Info

STRONG, RELIABLE, HYDRAULIC POWER

ML51120_AP53750.PUB 22SEP14