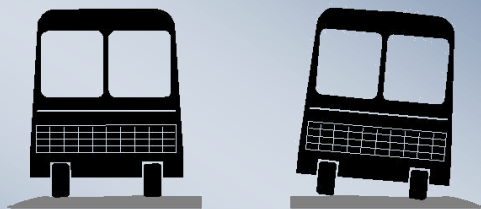


For more HWH® Products please visit [www.HWH.com](http://www.HWH.com)

#### HWH® Active Air Suspension System



With  
HWH® Active Air

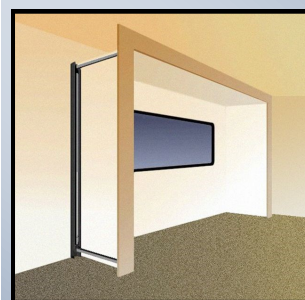
Without  
HWH® Active Air

HWH® Active Air is a four-point electronically controlled suspension system that enhances ride comfort by rapidly adjusting the suspension system toward proper height. The system reduces roll when rounding curves and turning corners.

#### HWH® Hydraulic Bed Lift Systems



Bed slides up sidewall to allow additional space for walk-around when room is retracted. Headboard moves up and down to keep pillows from moving behind bed. Allows for a larger bed, up to a California King. Allows access to rear closet and unrestricted storage space under bed.



#### HWH® Hydraulic Room Extension Systems and Accessories

Power your slide-out with a SpaceMaker® room extension system from HWH®. We have a full selection of above-floor, below-floor, level-in/level-out and full-wall models. Our room extension systems feature the same rugged construction, through engineering and top grade materials that have made HWH® the undisputed leader in RV leveling systems. We also have a line of slide-out accessories available including our Sweepze water/debris sweeper, room seals, room locks, travel clamps, glides strips and more.

#### HWH® Specialty Hydraulic Oil in two grades



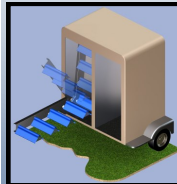
HWH® Specialty Hydraulic Oil with a Low-Temp performance down to -20° F.



HWH® Low-Temperature Specialty Hydraulic Oil with a Low-Temp performance down to -40° F.

This special oil was formulated for HWH®, to optimize the performance of their systems. HWH® oil is resistant to thickening and performs exceptionally well at sub-zero temperatures (pour point rated at -60 degrees Fahrenheit). This feature is especially advantageous for cold-climate RVers. Superior thermal and oxidative stability ensures long fluid life.

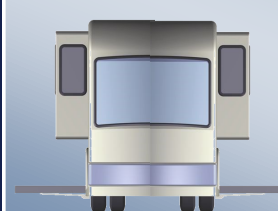
#### HWH® Hydraulic Saddle Rack



No more reaching up and struggling to place saddles on top racks. Entire rack folds down out of trailer tack room. Loading position is at table height and horizontal for easy loading and unloading. Can be mounted in new or existing trailer tack room.

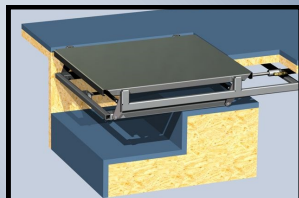
Available with three or four racks and left or right handed.

#### HWH® Dual-Direction Hydraulic Storage Slide



No more crawling into tight compartments. Slide-out can extend an 8' compartment out 5' from either side of the coach, handling loads up to 1,000 pounds (evenly loaded). Allows access to every inch of the bay without crawling in.

#### HWH® Interior Step Cover

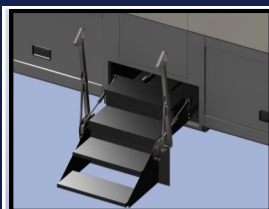


Increases usable floor space! When the HWH® Stairwell Cover is extended and raised, the inside stairwell is covered, making it flush with the floor of the RV (no step-down). The design is compact and lightweight.



**The Look of the Future!**

2096 Moscow Road, Moscow, Iowa 52760  
800-321-3494 | 563-724-3396  
Fax: 563-724-3408  
Visit us online at [HWH.com](http://HWH.com)



#### HWH® SpaceMaker Exterior Entry Steps

Four step for an easier climb! Steps fold out from under the coach. Frees up interior space more than conventional steps. Clean appearance, mechanism is hidden from view. Hydraulic power is widely used for its strength and durability. Design is compact and light weight.



**Hydraulic Leveling & Landing Gear Systems**  
**Active Air Suspension Systems | Air Leveling Systems**  
**Hydraulic Slide-Out Systems | Slide Out Accessories**  
**Systems Control Modules | Hydraulic Oil**  
**Hydraulic Saddle Racks | Hydraulic Bed Lift Systems**  
**Hydraulic Interior & Exterior Step Systems**



**Improving Your RV Experience Since 1967**

## WHY CHOOSE HWH® PRODUCTS?

One size doesn't fit all. HWH® leveling systems perform better because their individual component's are carefully matched to the exact needs of your vehicle.

Only HWH® makes pre-engineered mounting brackets for virtually every common chassis/suspension combination used in the RV industry. Our brackets place jacks at the ideal suspension points for proper leveling. Plus, we provide straight-acting, kick-down and power-extend/power-retract jacks in capacities ranging from 3,000 to 24,000 pounds per jack. Our unmatched choice of controls completes selecting the ideal system for your vehicle.

BI-AXIS® design raises sides or ends of the vehicle rather than single corners. That keeps chassis rails within a common plane to minimize twisting the coach structure. It also provides greater stability.

Why compromise? Call your local Dealer or HWH® Corporation for more information. You can also get leveling system MSRP pricing on our web site. Just look for "MatchMaker Software".

[www.HWH.com](http://www.HWH.com)

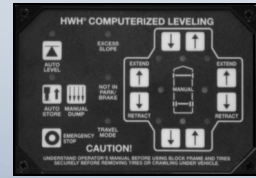




## HWH® Control Systems

### HWH® Computerized Leveling

The ultimate in leveling systems. Our BI-AXIS® computer automatically selects the fast, efficient way to level the vehicle. Hydraulic leveling systems deploy jack combinations to quickly level and stabilize the vehicle with minimum flexing of the coach structure.



#### Single-Step, Computer-Controlled, Hydraulic Leveling

Single-Step leveling systems level the coach with the touch of one button. The Leveleze® leveling indicator light system is standard on all systems.



#### Computer-Controlled, Air Leveling

Air leveling systems are available for motorhomes equipped with an air bag suspension. It automatically levels the motorhome and then re-checks for level every 30 minutes. If the vehicle has dropped out of level, a small, ultra-quiet air compressor restores the level condition.



#### Computer-Controlled, Hydraulic & Air Leveling

The hydraulic and air leveling system controls leveling with a single computer. The air system is ideal for short layovers while the hydraulic jacks provide stability for longer stops.

### HWH® Joystick Leveling

#### Joystick-Controlled, Hydraulic Leveling



Provides four-point BI-AXIS® leveling with a joystick valve control system. Once leveled, the remaining jacks can be extended to provide additional stability against the wind and activity in the vehicle. Joystick systems are available with the Leveleze® leveling indicator lights integrated into the control panel.



#### Joystick-Controlled, Hydraulic Leveling with Control Console

Our Joystick Control Console system allows for Class C installation and a more convenient operating height. The control console box is manufactured of a high strength polymer with an anti-scuff, textured finish. Hydraulic hoses, Level sensing unit and electrical connections are pre-plumbed onto the valve and are mounted inside the console box.

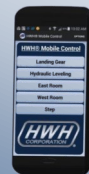
### HWH® Leveling for Towable RVs



Touch Panel-Controlled, Hydraulic Leveling utilizes the same type of hydraulic valving found on our premium computer-controlled systems. You simply push buttons indicated by the Leveleze® light system to level. It's fast and simple. This system features a hand-held, pendant-type controller for use outside the RV.



### HWH® Motorized Vehicle App



#### Controls...

- HWH® Hydraulic Slide-Outs
- HWH® Hydraulic Leveling Systems
- HWH® Exterior Entry Steps
- HWH® Generator Slide & more

### HWH® Towable App



Control HWH® Hydraulic Landing Gear from your vehicle cab for easy hitching and unhitching. Then, once you are unhitched you can also control your HWH Hydraulic Leveling system.

### HWH® Systems Control Module

Our Systems Control Module allows for control of multiple systems on your RV including suspension systems, leveling systems (air & hydraulic), slide-out systems (room and generator), awnings, automatic steps, energy management systems, etc. System is "RV-C" (CAN) compliant.



## HWH® Hydraulic Leveling Jacks

HWH® manufactures Kick-Down Jacks, Straight-Acting Jacks, Spring Retracted and Power-Up/Power-Down Jacks in a broad range of lifting capacities to fit virtually any RV. Our jacks feature state-of-the-art, corrosion protected hydraulic cylinders designed for long life.

### Power-Extend/Spring-Retract Jacks



#### ←4,000 Pound Straight-Acting, Telescoping Jack

Designed to fit RVs with a low under chassis clearance. The upper cylinder extends fully, then the lower (telescoping) cylinder extends, providing extra lift without requiring extra mounting clearance.



#### ←Straight-Acting Jacks

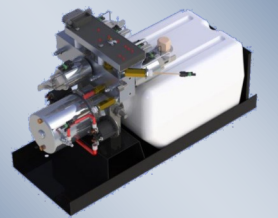
Rigid deployment and large pivoting foot pads allow for maximum stability and resist sinking into soft ground. Easy bolt-on jacks virtually eliminate the need for welding and minimize installation time.



#### ←Kick-Down Jacks

Easy to mount in tight situations and are usually not damaged if the motorhome is moved with the jacks down. All jacks are retracted mechanically by means of double springs. This ensures the jacks can be raised in the event of dead batteries.

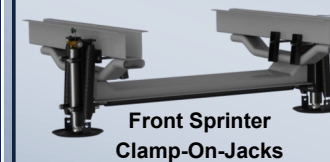
### 725 Series 12 Volt DC Motor and Pump



125 amp - 3,000 psi relief with prewired control module and jack valving

### Power-Extend/Spring-Retract Clamp-On-Jacks

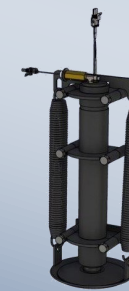
For vehicles with low clearance. Easy to install - No Welding - Saves time



Front Sprinter Clamp-On-Jacks



6000 lb. with a 16" stroke fixed



9000 lb. with a 13" stroke fixed



9000 lb. with a 16" stroke fixed



12000 lb. with a 13" stroke fixed



16000 lb. with a 13" stroke fixed



Rear E450 Clamp-On-Jacks

### Power-Extend/Power-Retract Jacks and Hydraulic Pump with Manual Extend and Retract



**Power-Extend/Power-Retract Jacks** are specifically engineered for "landing" specialty trailers and horse trailers. This jack can be used as landing gear or combined with rear jacks to make a complete leveling system. This system utilizes one or two straight-acting jacks with a 21" stroke and a lifting capacity of 8,000 pounds.



7,000 lb./21" stroke  
12,000 lb./21" stroke  
12,000 lb./24" stroke  
12,000 lb./30" stroke  
24,000 lb./24" stroke  
Comes with welded or bolt on brackets



24,000 lb. with a 16" stroke



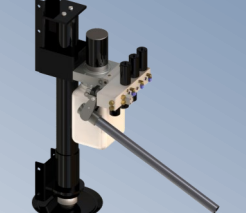
12,000 lb. with a 16" stroke



16,000 lb. with a 16" stroke

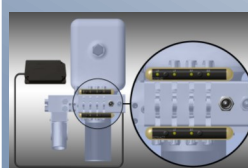


Precision Leveling  
Within a .05 degree tolerance.

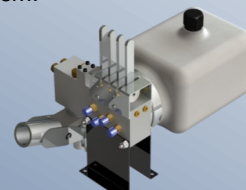


Integrated Jack and Power Unit  
12,000 lb. with a 24" stroke

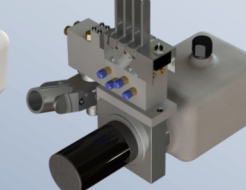
**Hydraulic Pump with Manual Extend and Retract** control valve assembly is equipped with a two stage hand pump which automatically shifts from high volume with low pressure to low volume with high pressure. This provides a rapid extend or retract of the landing gear along with the capability to actually lift the trailer when the hand pump is used. The same controls used for standard operation of the landing gear are used for manual extend and retract with the hand pump. The hand pump can also be used to extend or retract any HWH® room mechanism.



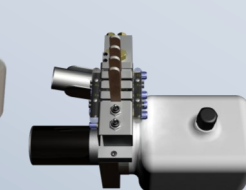
Optional Leveleze® Indicator Light System



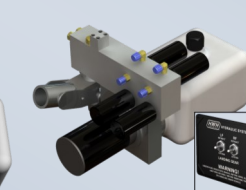
Hand Pump with Hydraulic Switches (no electrical power is required)



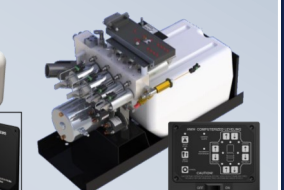
Hand/Electric Pump with Hydraulic Switches



Hand/Electrical Pump with Hydraulic Switches



Hand/Electrical Pump with Remote Electrical Panel



Hand/Electrical Pump with Automatic Computerized Full Leveling Control