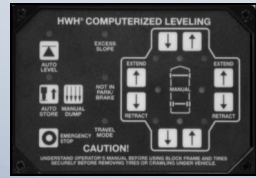


# HWH® Control Systems

## HWH® Computerized Leveling

The ultimate in leveling systems. Our BI-AXIS® computer automatically selects the fast, efficient way to level the vehicle. Hydraulic leveling systems deploy jack combinations to quickly level and stabilize the vehicle with minimum flexing of the coach structure.



### Single-Step, Computer-Controlled, Hydraulic Leveling

Single-Step leveling systems level the coach with the touch of one button. The Leveze® leveling indicator light system is standard on all systems.



### Computer-Controlled, Air Leveling

Air leveling systems are available for motorhomes equipped with an air bag suspension. It automatically levels the motorhome and then re-checks for level every 30 minutes. If the vehicle has dropped out of level, a small, ultra-quiet air compressor restores the level condition.



### Computer-Controlled, Hydraulic & Air Leveling

The hydraulic and air leveling system controls leveling with a single computer. The air system is ideal for short layovers while the hydraulic jacks provide stability for longer stops.

# HWH® Hydraulic Leveling Jacks

HWH® manufactures Kick-Down Jacks, Straight-Acting Jacks, Spring Retracted and Power-Up/Power-Down Jacks in a broad range of lifting capacities to fit virtually any RV. Our jacks feature state-of-the-art, corrosion protected hydraulic cylinders designed for long life.

## Power-Extend/Spring-Retract Jacks



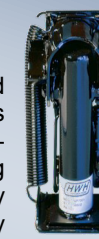
### ←4,000 Pound Straight-Acting, Telescoping Jack

Designed to fit RVs with a low under chassis clearance. The upper cylinder extends fully, then the lower (telescoping) cylinder extends, providing extra lift without requiring extra mounting clearance.



### ←Straight-Acting Jacks

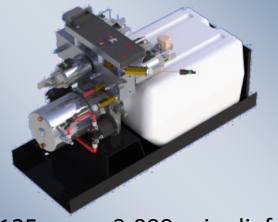
Rigid deployment and large pivoting foot pads allow for maximum stability and resist sinking into soft ground. Easy bolt-on jacks virtually eliminate the need for welding and minimize installation time.



### ←Kick-Down Jacks

Easy to mount in tight situations and are usually not damaged if the motorhome is moved with the jacks down. All jacks are retracted mechanically by means of double springs. This ensures the jacks can be raised in the event of dead batteries.

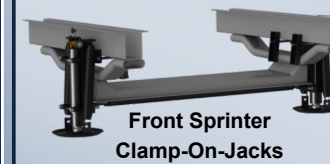
## 725 Series 12 Volt DC Motor and Pump



125 amp - 3,000 psi relief with prewired control module and jack valving

## Power-Extend/Spring-Retract Clamp-On-Jacks

For vehicles with low clearance. Easy to install - No Welding - Saves time



Front Sprinter Clamp-On-Jacks



6000 lb. with a 16" stroke fixed



9000 lb. with a 13" stroke fixed



9000 lb. with a 16" stroke fixed



12000 lb. with a 13" stroke fixed



16000 lb. with a 13" stroke fixed



Rear E450 Clamp-On-Jacks

## HWH® Joystick Leveling

### Joystick-Controlled, Hydraulic Leveling



Provides four-point BI-AXIS® leveling with a joystick valve control system. Once leveled, the remaining jacks can be extended to provide additional stability against the wind and activity in the vehicle. Joystick systems are available with the Leveze® leveling indicator lights integrated into the control panel.



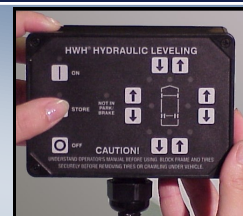
### Joystick-Controlled, Hydraulic Leveling with Control Console

Our Joystick Control Console system allows for Class C installation and a more convenient operating height. The control console box is manufactured of a high strength polymer with an anti-scuff, textured finish. Hydraulic hoses, Level sensing unit and electrical connections are pre-plumbed onto the valve and are mounted inside the console box.

## HWH® Leveling for Towable RVs



Touch Panel-Controlled, Hydraulic Leveling utilizes the same type of hydraulic valving found on our premium computer-controlled systems. You simply push buttons indicated by the Leveze® light system to level. It's fast and simple. This system features a hand-held, pendant-type controller for use outside the RV.



## HWH® Motorized Vehicle App



### Controls...

- HWH® Hydraulic Slide-Outs
- HWH® Hydraulic Leveling Systems
- HWH® Exterior Entry Steps
- HWH® Generator Slide & more

## HWH® Towable App



Control HWH® Hydraulic Landing Gear from your vehicle cab for easy hitching and unhitching. Then, once you are unhitched you can also control your HWH Hydraulic Leveling system.

## HWH® Systems Control Module

Our Systems Control Module allows for control of multiple systems on your RV including suspension systems, leveling systems (air & hydraulic), slide-out systems (room and generator), awnings, automatic steps, energy management systems, etc. System is "RV-C" (CAN) compliant.



## Power-Extend/Power-Retract Jacks and Hydraulic Pump with Manual Extend and Retract



Power-Extend/Power-Retract Jacks are specifically engineered for "landing" specialty trailers and horse trailers. This jack can be used as landing gear or combined with rear jacks to make a complete leveling system. This system utilizes one or two straight-acting jacks with a 21" stroke and a lifting capacity of 8,000 pounds.



7,000 lb./21" stroke  
12,000 lb./21" stroke  
12,000 lb./24" stroke  
12,000 lb./30" stroke  
24,000 lb./24" stroke  
Comes with welded or bolt on brackets



24,000 lb. with a 16" stroke



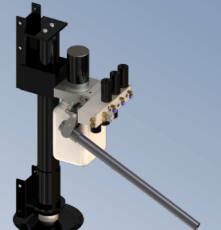
12,000 lb. with a 16" stroke



16,000 lb. with a 16" stroke

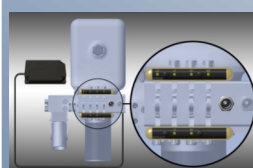


Precision Leveling  
Within a .05 degree tolerance.

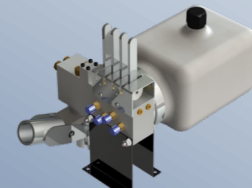


Integrated Jack and Power Unit  
12,000 lb. with a 24" stroke

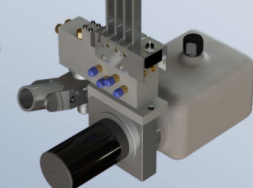
Hydraulic Pump with Manual Extend and Retract control valve assembly is equipped with a two stage hand pump which automatically shifts from high volume with low pressure to low volume with high pressure. This provides a rapid extend or retract of the landing gear along with the capability to actually lift the trailer when the hand pump is used. The same controls used for standard operation of the landing gear are used for manual extend and retract with the hand pump. The hand pump can also be used to extend or retract any HWH® room mechanism.



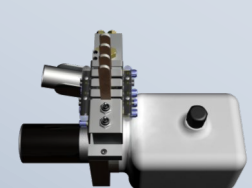
Optional Leveze® Indicator Light System



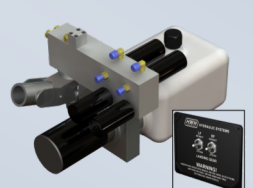
Hand Pump with Hydraulic Switches (no electrical power is required)



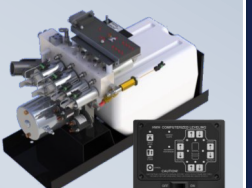
Hand/Electric Pump with Hydraulic Switches



Hand/Electrical Pump with Hydraulic Switches



Hand/Electrical Pump with Remote Electrical Panel



Hand/Electrical Pump with Automatic Computerized Full Leveling Control